

Configuring UPS Notifications

for

FlashNAS ZFS Series

Abstract

This application note describes how to configure a UPS (APC Smart-UPS is used as an example) to a FlashNAS ZFS series system for protection against unexpected power outages.

Table of Contents

Product Models Covered by This Document.....	3
FlashNAS Family of Unified Storage Systems	4
UPS (Uninterruptible Power Supply).....	5
Configuring FlashNAS ZFS for Network UPS Connection.....	6
<i>Step 1: Preparing the Environment.....</i>	<i>6</i>
<i>Step 2: Configuring the UPS.....</i>	<i>6</i>
<i>Step 3: Configuring the FlashNAS ZFS System</i>	<i>7</i>

Product Models Covered by This Document

This document applies to the following product models:

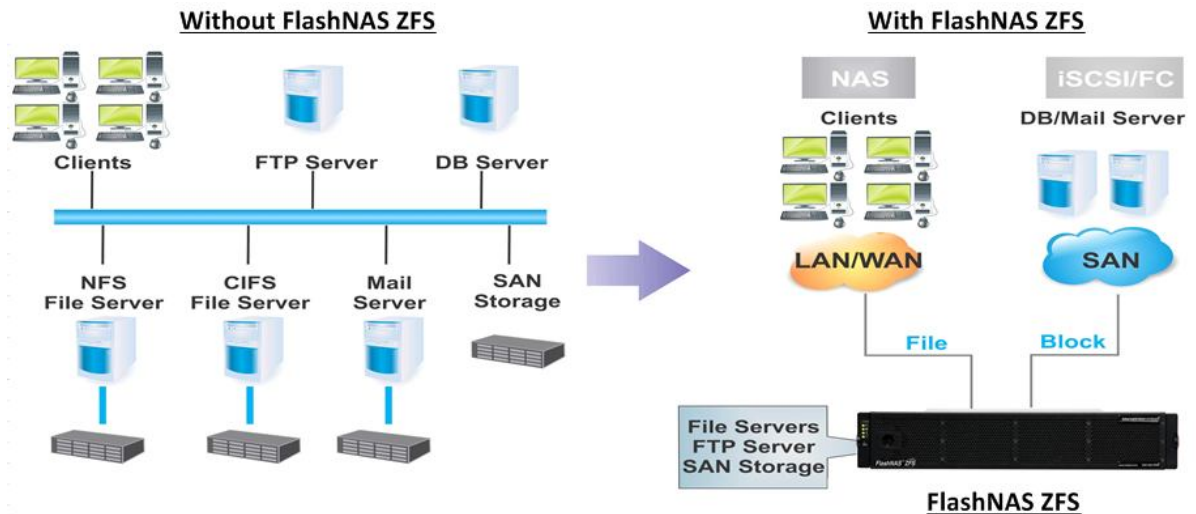
- **FlashNAS ZX2U12**
- **FlashNAS ZX3U16**

For more information about compression, virtualization, snapshot, remote replication, ZFS, backup, storage, network-attached-storage, file-sharing and WORM (Write Once, Read Many), please visit www.winsys.com

FlashNAS ZFS Family of Unified Storage Systems

IT environments often feature multiple types of storage infrastructures to accommodate various types of data and achieve different service levels. The scattered boxes for DAS (Direct-Attached Storage), SAN (Storage Area Network) and NAS (Network-Attached Storage) configurations lead to poor utilization and complicated management.

FlashNAS ZFS simultaneously serves file and block-based applications with a unified storage platform, and features easy management, optimized resource utilization, high availability, flexible scalability and competitive price/performance. In addition, FlashNAS ZFS offers a comprehensive set of advanced software features at no additional costs. FlashNAS ZFS systems help businesses effectively meet diverse and changing data demand while staying within budget.



UPS (Uninterruptible Power Supply)

A UPS is an equipment for protecting electronic devices from unexpected power failures and shutting down the devices in a safe manner. The UPS provides temporary emergency power using a large capacity battery to a FlashNAS ZFS system when a power outage and other unexpected power fails occur. In addition to supplying power to a FlashNAS ZFS system, the UPS also sends out a “Shut Down” message to the FlashNAS ZFS system so that the system can safely turn its power off without losing vital user data.

FlashNAS ZFS systems accept SNMP (Simple Network Management Protocol) trap signal as the “Shut Down” notification from a UPS. Users need to connect the LAN port of the UPS into the same network as the FlashNAS ZFS system. In this case, some amount of configurations are required on both the UPS and the FlashNAS ZFS system.

The following sections describe how to configure the FlashNAS ZFS system as well as the UPS (APC SMART-UPS 1500 is used as an example).

Please contact Winchester Systems support for a complete list of UPS devices that are compatible with the FlashNAS ZFS.

Configuring FlashNAS ZFS Network UPS Connection

Step 1: Preparing the Environment

1. Connect the power cable of the FlashNAS ZFS system to the UPS instead of the usual power socket.
2. Connect the Ethernet cable of the UPS to the same subnet as the FlashNAS ZFS system, preferably the same router/switch.
3. Activate both the FlashNAS ZFS system and the UPS.
4. Note down the IP address of the FlashNAS ZFS system.

Step 2: Configuring the UPS

1. Enter the management tool for the UPS. (APC SmartUPS 1500 is used here as an example).

Select the *Administration* tab in the *UPS Network Management Card* interface, select the *Notification* menu on the top bar, and click *SNMP Traps > trap receivers* from the side menu bar.

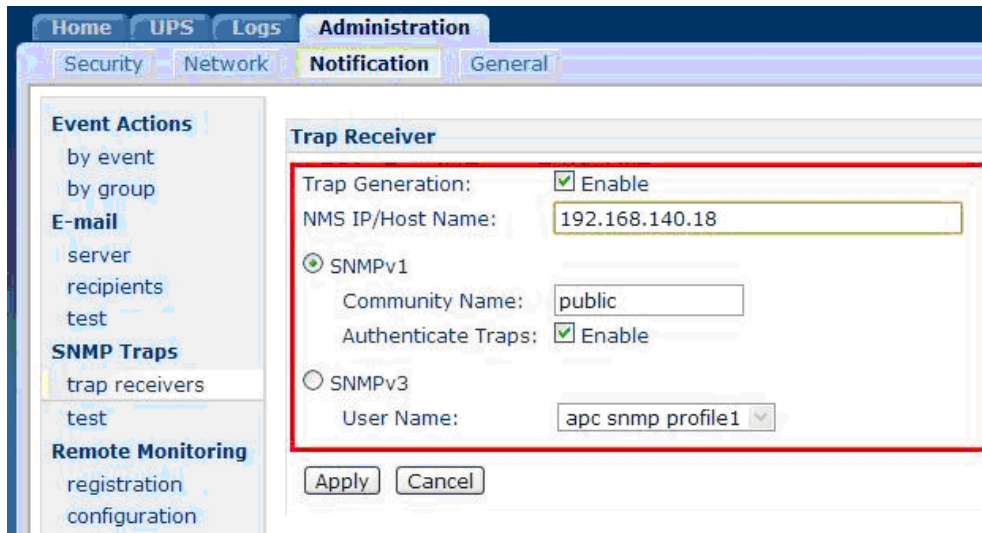


2. The list of trap receivers (devices that will receive the “Shut Down” notification when a power outage occurs) will appear. Click the *Add Trap Receiver* button to add the FlashNAS ZFS system as the SNMP trap receiver.

Configuring UPS Notification for FlashNAS ZFS Series



3. The SNMP trap configuration screen will appear.



Enter the following parameters and click the *Apply* button to complete the UPS settings.

Step 3: Configuring the FlashNAS ZFS System

1. Enter the FlashNAS ZFS web interface and go to the Configuration > Peripheral > Miscellaneous menu.



Configuring UPS Notification for FlashNAS ZFS Series

2. Check the UPS Support box to enable it. Leave the SNMP Trap Listen Port as the default value, 162.

UPS

An externally connected UPS (Uninterruptible Power Supply) protects your data from power outages.

Enable UPS Support

SNMP Trap Listen Port:

3. Click the Apply button.